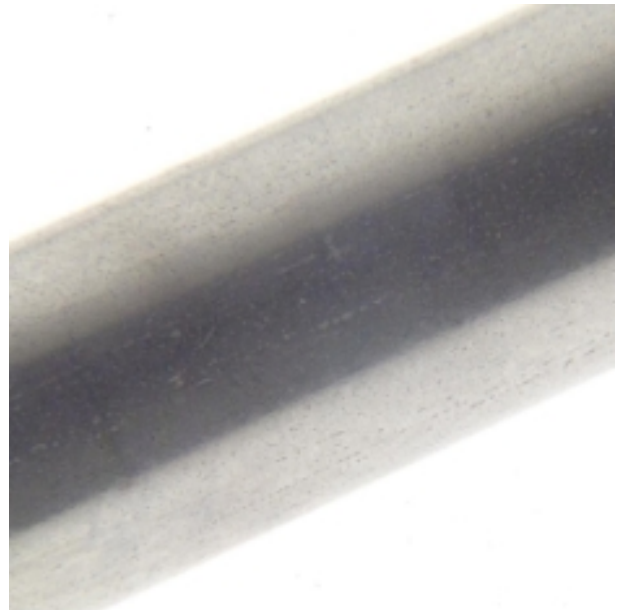




## Pot Seals - Plain Stainless Steel



Labfacility are the UK's leading manufacturer of Temperature Sensors, Thermocouple Connectors and associated Temperature Instrumentation and stockings of Thermocouple Cables. The Company has been trading since 1971 and is ISO9001 accredited.

Plain stainless steel pot seals are essential for creating secure, leak-proof connections in various industrial and mechanical applications.

Their corrosion resistance, durability, and strength make them suitable for harsh environments.

Proper selection, installation, and maintenance ensure reliable performance and long-lasting durability.

### Specifications

## Specifications

<b>General Description</b>	Pot Seals to house the transition joints of sensor to extension leads
<b>Material</b>	Stainless steel
<b>Thread</b>	Plain bodied
<b>Length</b>	15mm to 44mm