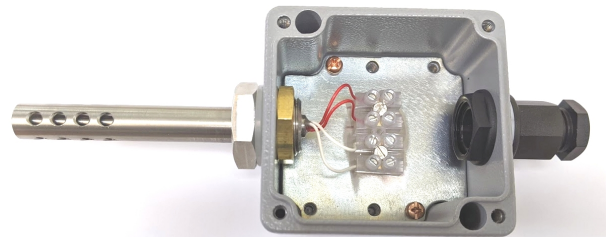
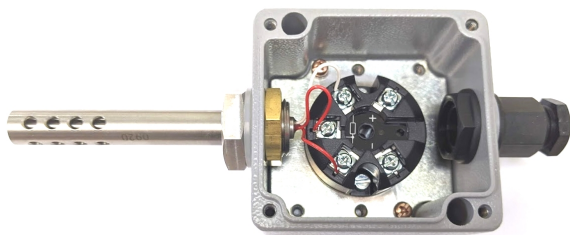
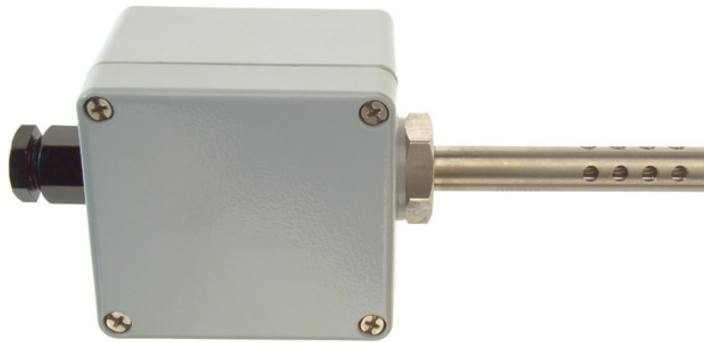


Pt100 Outdoor / Cold Store Temperature Sensors - Type PRT



Labfacility are the UK's leading manufacturer of Temperature Sensors, Thermocouple Connectors and associated Temperature Instrumentation and stockings of Thermocouple Cables. The Company has been trading since 1971 and is ISO9001 accredited.

Single element (XE-3673-001):

Single 4 wire element, allowing connection to any Pt100 2, 3 or 4 wire instrument

Dual element (XE-3674-001):

Duplex 2 x 4 wire with two independent sensing elements, allowing connection to two measurement or control devices; alternatively one sensor may be used as a primary and the other as a back up, eliminating the need to remove and replace the probe if one of the sensors should fail – can be connected to any Pt100 2, 3 or 4 wire instrument

Single element with 4-20mA output (XE-3675-001):

Includes integral transmitter which converts the Pt100 sensor output to a standard industrial 4 to 20mA output signal over pre-configured range of -50 to +150°C. It is also configurable by the user allowing range and burnout direction to be changed. It also allows the user to trim output current at either 4 or 20mA

Specifications

Sensor type:

Pt100 (100 Ohms @ 0°C) to IEC 751, Class B

XE-3673-001: 4 wire single element

XE-3674-001: 2 x 4 wire dual element

XE-3675-001: 3 wire single element with transmitter, 4-20mA 2 wire current loop output, default range -50 to +150°C (other ranges can be scaled/configured by user, 25°C minimum span - further transmitter specifications below)

*Note – transmitter device has an ambient operating range of -40 to +85°C

Specifications

| | |
|----------------------------|--|
| General Description | Weatherproof IP67 rated wall mounting Pt100 for accurate outdoor air temperature sensing |
| Sensor Type | Choice of either single or dual element, or single element with 4-20mA output |
| Housing | Painted Die-Cast Aluminium Housing L80 x W74 x H54mm |
| Element | Pt100, class B to IEC 751 |



| | |
|-------------------------|---|
| Sheath Material | Perforated 316 stainless steel probe, 12.7mm x 75mm |
| Gland | M20 cable entry gland |
| Max. Temperature | +150°C |
| Min. Temperature | -50°C |
| IP Rating | IP67 |
| Transmitter | Optional |
| Number of Wires | 2 or 4 |