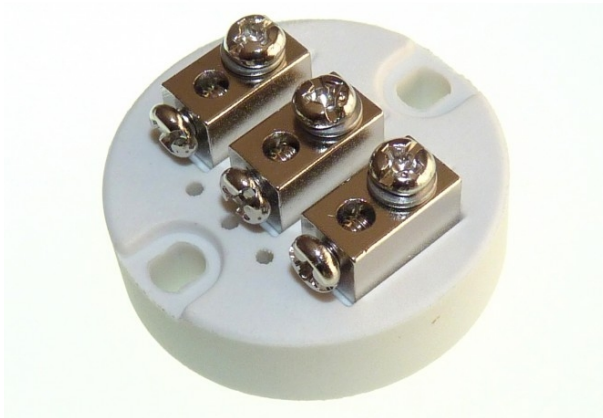


## Terminal Blocks - Ceramic



Labfacility are the UK's leading manufacturer of Temperature Sensors, Thermocouple Connectors and associated Temperature Instrumentation and stockings of Thermocouple Cables. The Company has been trading since 1971 and is ISO9001 accredited.

Terminal blocks come in many different types and sizes to suit your terminal head.

Check carefully the dimensions of the fixing holes on your terminal head before choosing the correct block.

**Way**

**Order Code**

**Diameter**

**Fixings**

**Fits Head**

3

XE-3833-001

34mm

27mm

KNS

4

XE-3830-001

42mm

33mm

KNE, KNP, KPP, B, SCH4

4 (Spring Loaded)

XE-3831-001

42mm

33mm

KNE, KNP, KPP, B, SCH4

6

XE-3832-001

50mm

40mm

KNE, KNP, KPP, SCH4

## Specifications

<b>Material</b>	Ceramic
<b>Fixing (Centres)</b>	27mm, 33mm or 40mm
<b>Colour</b>	Natural
<b>Dimensions</b>	34mm, 42mm or 50mm
<b>To Fit Head</b>	KNE, KNP, KPP, B, SCH4
<b>Sensor Type</b>	PRT
<b>Sizes</b>	3, 4 or 6 Way