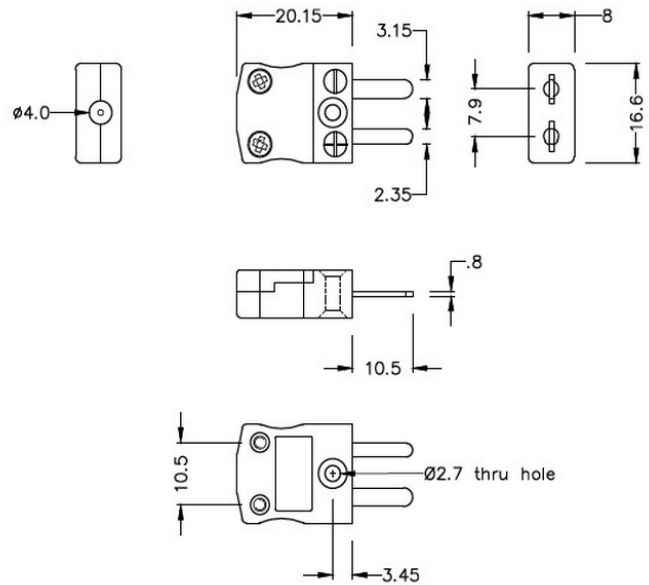
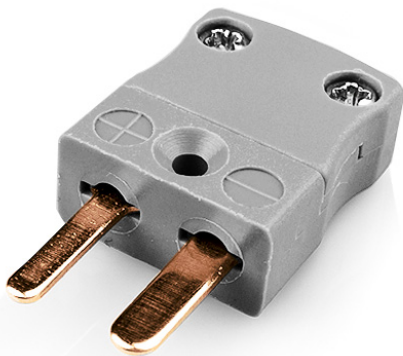


Miniature Thermocouple Connector Plug IM-B-M Type B IEC



Miniature in-line Plug
(dimensions in mm)

[Click here to view product](#)

Product Code	XE-1350-001
General Description	Ideal for general purpose use. Contacts are polarised to ensure correct connection.
Thermocouple Type	B IEC
Connector Type	Plug
Connector Size	Miniature
Colour	Grey
Max. Temperature	220°C
Pins	Flat Pins
+Positive Contact	Copper
-Negative Contact	Copper

Standards Met	BS EN 50212:1997. RoHS
---------------	------------------------

