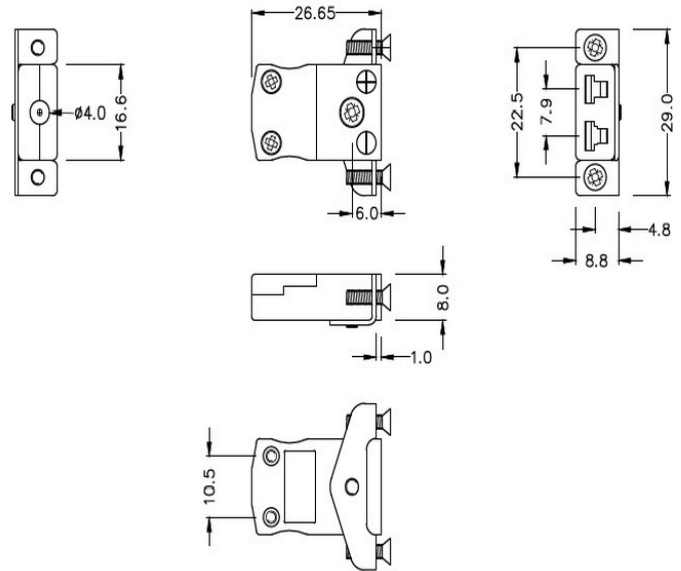


Miniature Panel Mount Thermocouple Connector with Stainless Steel Bracket IM-K-SSPF Type K IEC



Miniature in-line Socket with stainless steel mounting bracket
 (dimensions in mm)

[Click here to view product](#)

Product Code	XE-1108-001
General Description	Fully enclosed terminals with cable port seal
Thermocouple Type	K IEC
Connector Type	Socket with SS Bracket
Connector Size	Miniature
Colour	Green
Dimensions	See Schematic Drawing (Product Literature Tab)
Max. Temperature	220°C
+Positive Contact	Nickel Chromium
-Negative Contact	Nickel Alloy

Standards Met	BS EN 50212:1997. RoHS
---------------	------------------------

