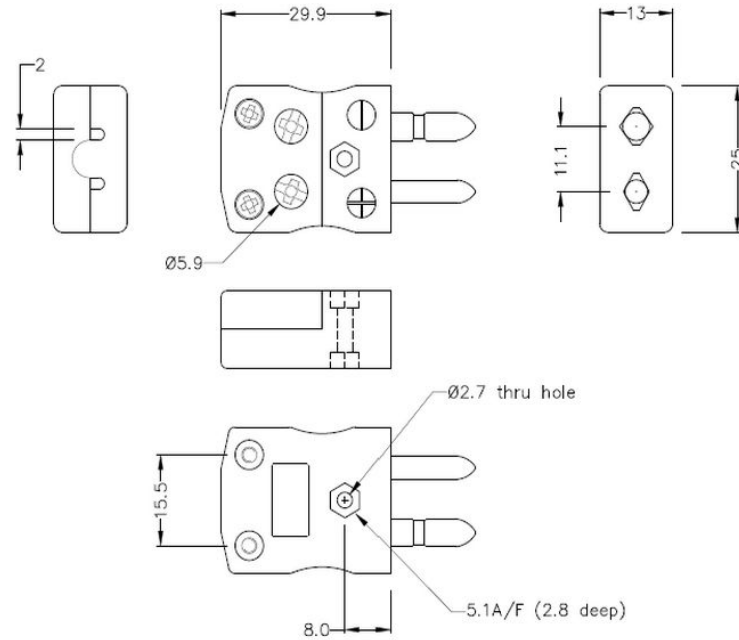
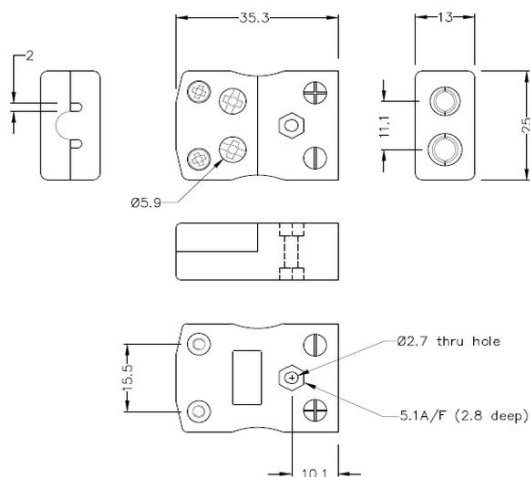


Standard Quick Wire Thermocouple Connector Plug & Socket IS-J-MQ+FQ Type J IEC



Standard in-line Plug - Quick Wire
(dimensions in mm)



Standard in-line Socket - Quick Wire
(dimensions in mm)



Labfacility are the UK's leading manufacturer of Temperature Sensors, Thermocouple Connectors and associated Temperature Instrumentation and stockings of Thermocouple Cables. The Company has been trading since 1971 and is ISO9001 accredited.

Standard Quick Wire Thermocouple Connector Plug & Socket IS-J-MQ+FQ Type J IEC

Easy 'jab-in' connection for rapid termination, just push wire in and tighten screw. Contacts are polarised to prevent incorrect connection

Specifications**Specifications**

Product Code	XE-1051-001
General Description	Easy 'jab-in' connection for rapid termination, contacts are polarised to prevent incorrect connection
Thermocouple Type	J IEC
Connector Size	Standard
Connector Type	Quick Wire Plug & Socket
Colour	Black
Max. Temperature	220°C
Pins	Solid Round Pins
+Positive Contact	Iron
-Negative Contact	Copper Nickel
Standards Met	BS EN 50212:1997. RoHS