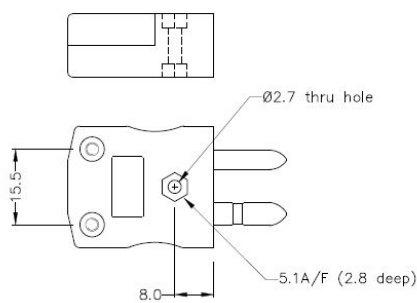
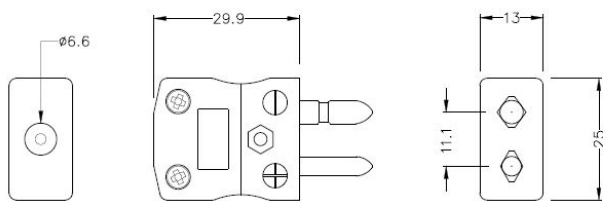
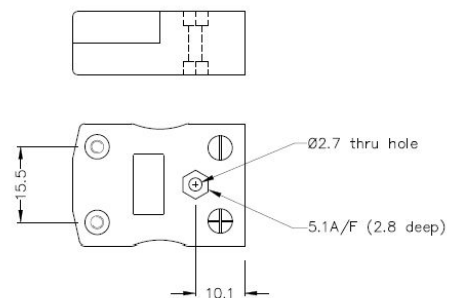
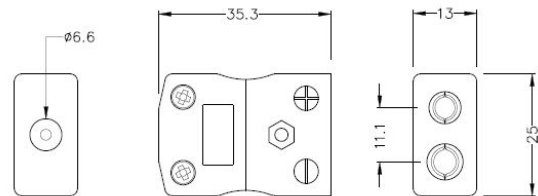


Standard Thermocouple Connector Plug & Socket AS-J-M+F Type J ANSI



Standard in-line Plug
(dimensions in mm)



Standard in-line Socket
(dimensions in mm)

[Click here to view product](#)

Product Code	XE-1059-001
General Description	Contacts are polarised to prevent incorrect connection
Thermocouple Type	J ANSI
Connector Size	Standard
Connector Type	Plug & Socket
Colour	Black
Max. Temperature	220°C
Pins	Solid Round Pins
+Positive Contact	Iron
-Negative Contact	Copper Nickel

Standards Met	BS EN 50212:1997. RoHS
----------------------	------------------------

