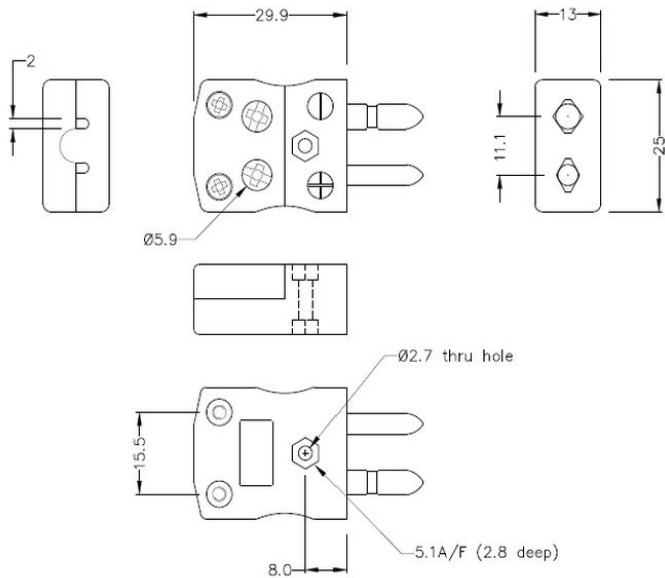
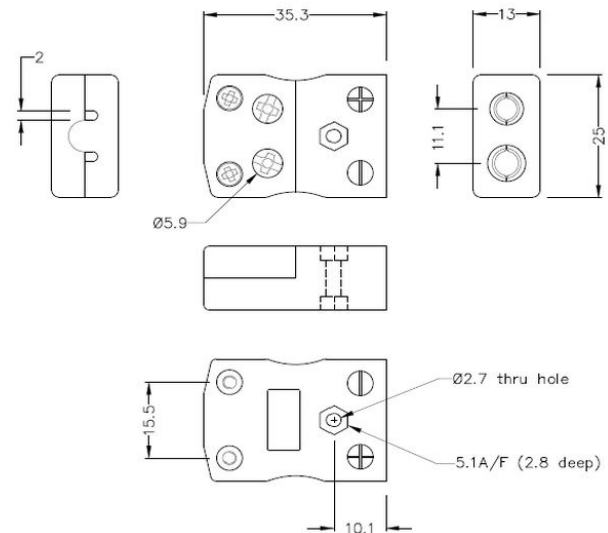


Standard Quick Wire Thermocouple Connector Plug & Socket AS-T-MQ+FQ Type T ANSI



Standard in-line Plug - Quick Wire
(dimensions in mm)



Standard in-line Socket - Quick Wire
(dimensions in mm)

[Click here to view product](#)

Product Code	XE-1068-001
General Description	Easy 'jab-in' connection for rapid termination, contacts are polarised to prevent incorrect connection
Thermocouple Type	T ANSI
Connector Size	Standard
Connector Type	Quick Wire Plug & Socket
Colour	Blue
Max. Temperature	220°C
Pins	Solid Round Pins
+Positive Contact	Copper

-Negative Contact	Copper Nickel
Standards Met	BS EN 50212:1997. RoHS

