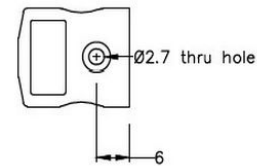
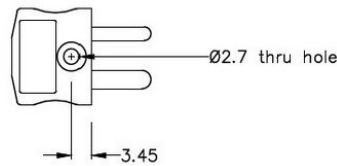
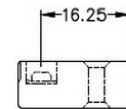
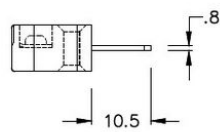
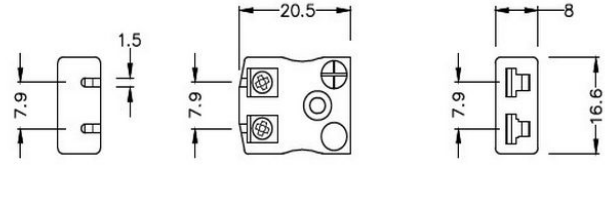
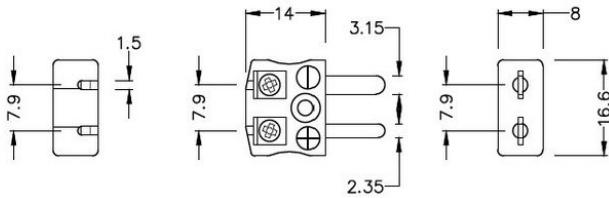


Miniature Quick Wire Connector Thermocouple Plug & Socket JM-E-MQ+FQ Type E JIS



Miniature in-line Plug - Quick Wire
(dimensions in mm)

Miniature in-line Socket - Quick Wire
(dimensions in mm)

[Click here to view product](#)

Product Code	XE-1040-001
General Description	Easy jab-in connection for rapid termination
Thermocouple Type	E JIS
Connector Size	Miniature
Connector Type	Quick Wire Plug & Socket
Colour	Violet
Max. Temperature	220°C
Pins	Flat Pins
+Positive Contact	Nickel Chromium
-Negative Contact	Copper Nickel



Standards Met	BS EN 50212:1997. RoHS
---------------	------------------------

