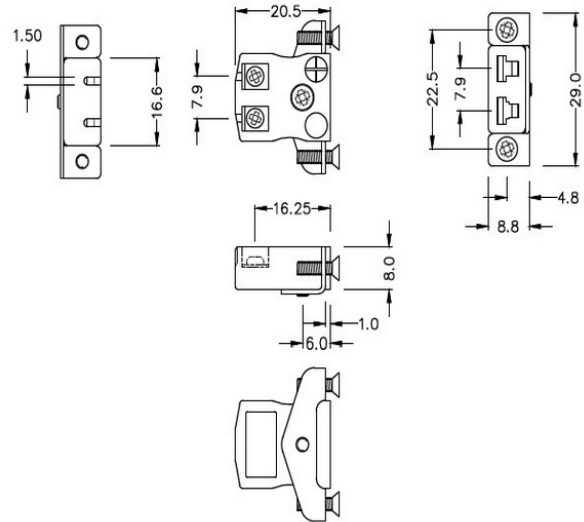


Miniature Quick Wire Thermocouple Connector Panel Mount with Stainless Steel Bracket IM-J-SSPFQ Type J IEC



**Miniature Socket -
Quick Wire with stainless steel mounting bracket**
(dimensions in mm)

[Click here to view product](#)

Product Code	XE-1166-001
General Description	Contacts are polarized to ensure correct connection
Thermocouple Type	J IEC
Connector Type	Quick Wire Socket with SS Bracket
Connector Size	Miniature
Colour	Black
Max. Temperature	220°C
+Positive Contact	Iron
-Negative Contact	Copper Nickel
Standards Met	BS EN 50212:1997. RoHS

