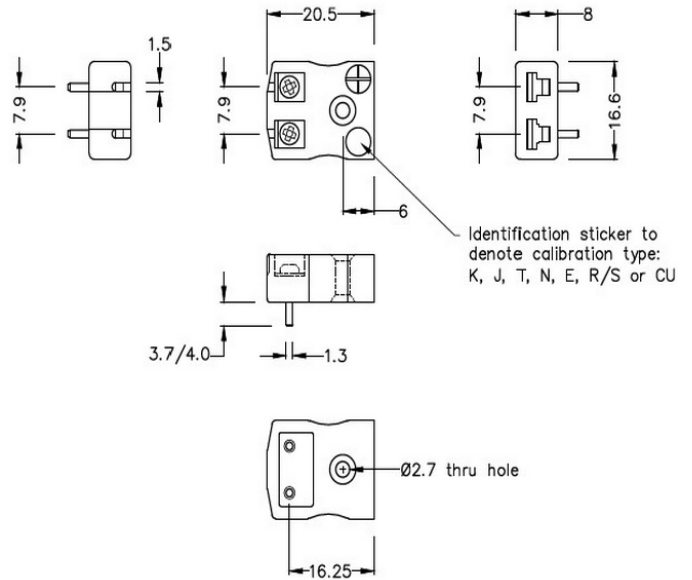


# PCB Mounting Thermocouple Connector Socket IM-J-PCB Type J IEC



**Miniature PCB Socket**  
(dimensions in mm)

[Click here to view product](#)

<b>Product Code</b>	XE-1169-001
<b>General Description</b>	Versatile, high quality circuit board mounting miniature socket
<b>Thermocouple Type</b>	J IEC
<b>Connector Type</b>	PCB Socket
<b>Connector Size</b>	Miniature
<b>Colour</b>	Black
<b>Max. Temperature</b>	220Å°C
<b>+Positive Contact</b>	Iron
<b>-Negative Contact</b>	Copper Nickel
<b>Standards Met</b>	BS EN 50212:1997. RoHS