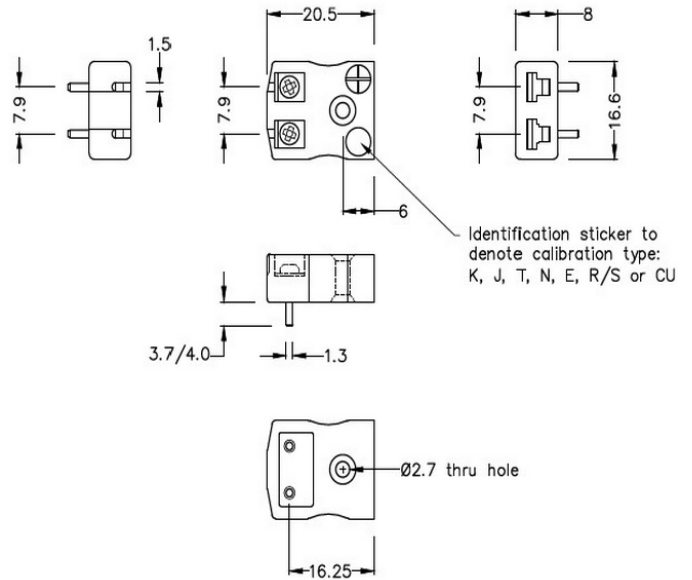


# PCB Mounting Thermocouple Connector Socket

## IM-B-PCB Type B IEC



**Miniature PCB Socket**  
(dimensions in mm)

[Click here to view product](#)

|                            |   |
|----------------------------|---|
| <b>Product Code</b>        | XE-1359-001   |
| <b>General Description</b> | Versatile, high quality circuit board mounting miniature socket |
| <b>Thermocouple Type</b>   | B IEC   |
| <b>Connector Type</b>      | PCB socket  |
| <b>Connector Size</b>      | Miniature   |
| <b>Colour</b>              | Grey  |
| <b>Max. Temperature</b>    | 220°C   |
| <b>+Positive Contact</b>   | Copper  |
| <b>-Negative Contact</b>   | Copper  |
| <b>Standards Met</b>       | BS EN 50212:1997. RoHS  |

