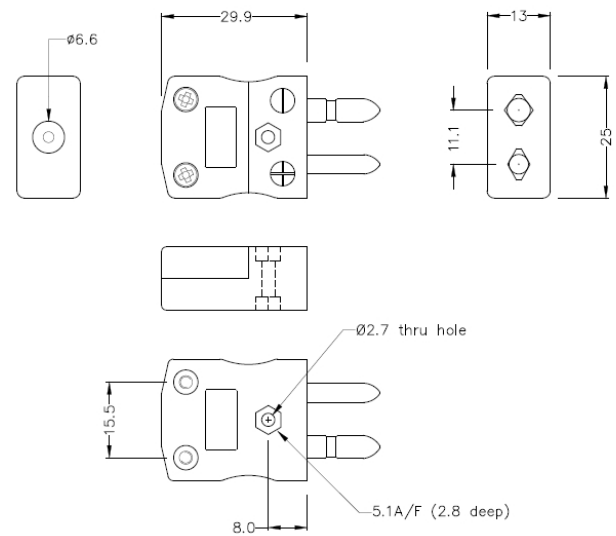


# Standard Thermocouple Connector Plug IS-R/S-M Type R/S IEC



**Standard in-line Plug**  
(dimensions in mm)

[Click here to view product](#)

<b>Product Code</b>	XE-1590-001
<b>General Description</b>	Contacts are polarised to prevent incorrect connection
<b>Thermocouple Type</b>	R/S IEC
<b>Connector Type</b>	Plug
<b>Connector Size</b>	Standard
<b>Colour</b>	Orange
<b>Max. Temperature</b>	220°C
<b>Pins</b>	Solid Round Pins
<b>+Positive Contact</b>	Copper
<b>-Negative Contact</b>	Copper Alloy

<b>Standards Met</b>	BS EN 50212:1997. RoHS
----------------------	------------------------

