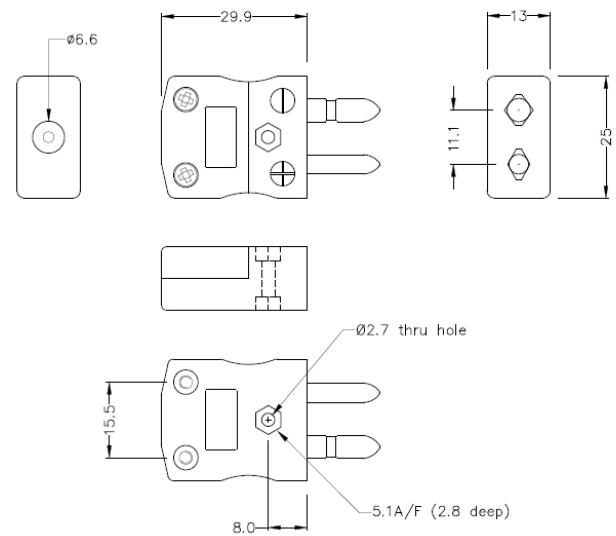
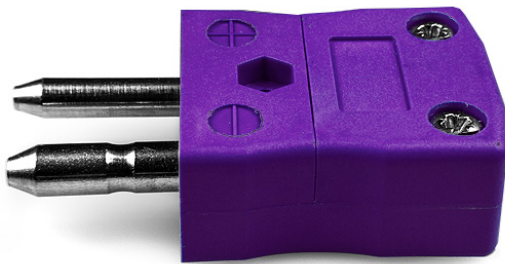


# Standard Thermocouple Connector Plug IS-E-M Type E IEC



**Standard in-line Plug**  
(dimensions in mm)

[Click here to view product](#)

<b>Product Code</b>	XE-1630-001
<b>General Description</b>	Contacts are polarised to prevent incorrect connection
<b>Thermocouple Type</b>	E IEC
<b>Connector Type</b>	Plug
<b>Connector Size</b>	Standard
<b>Colour</b>	Violet
<b>Max. Temperature</b>	220°C
<b>Pins</b>	Solid Round Pins
<b>+Positive Contact</b>	Nickel Chromium
<b>-Negative Contact</b>	Copper Nickel

Standards Met	BS EN 50212:1997. RoHS
---------------	------------------------

