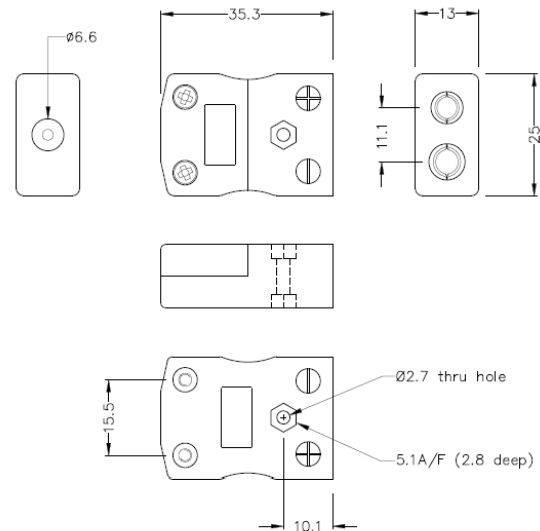


Standard Thermocouple Connector In-Line Socket IS-R/S-F Type R/S IEC



Standard in-line Socket
(dimensions in mm)

[Click here to view product](#)

Product Code	XE-1592-001
General Description	Accepts standard round plug pins, contacts are polarised to prevent incorrect connection.
Thermocouple Type	R/S IEC
Connector Type	Socket
Connector Size	Standard
Colour	Orange
Max. Temperature	220°C
+Positive Contact	Copper
-Negative Contact	Copper Alloy

Standards Met	BS EN 50212:1997. RoHS
----------------------	------------------------

