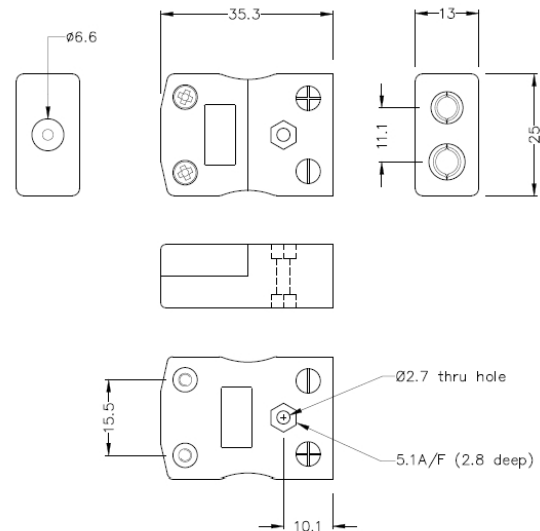


Standard Thermocouple Connector In-Line Socket IS-E-F Type E IEC



Standard in-line Socket
(dimensions in mm)

[Click here to view product](#)

Product Code	XE-1632-001
General Description	Accepts standard round plug pins, contacts are polarised to prevent incorrect connection.
Thermocouple Type	E IEC
Connector Type	Socket
Connector Size	Standard
Colour	Violet
Max. Temperature	220°C
+Positive Contact	Nickel Chromium
-Negative Contact	Copper Nickel

Standards Met	BS EN 50212:1997. RoHS
---------------	------------------------

