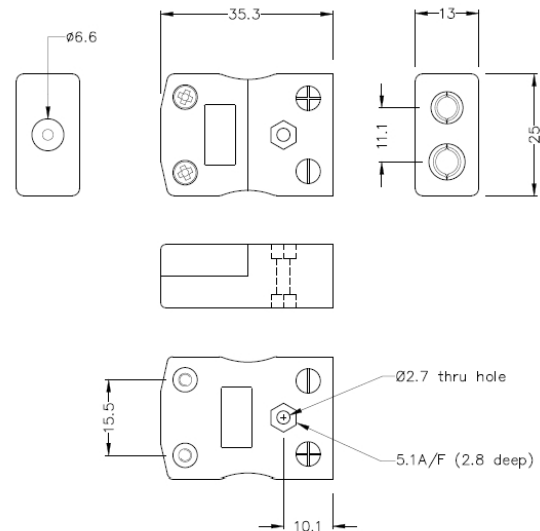


Standard Thermocouple Connector In-Line Socket FSTC-CU-F Type Cu



Standard in-line Socket
(dimensions in mm)

[Click here to view product](#)

Product Code	XE-1672-001
General Description	Accepts standard round plug pins, contacts are polarised to prevent incorrect connection.
Thermocouple Type	IEC, ANSI, JIS Type CU
Connector Type	Socket
Connector Size	Standard
Colour	White
Max. Temperature	220°C
+Positive Contact	Copper
-Negative Contact	Copper

Standards Met	BS EN 50212:1997. RoHS
----------------------	------------------------

