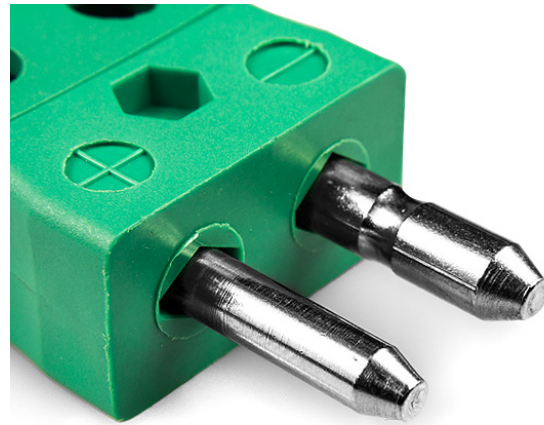
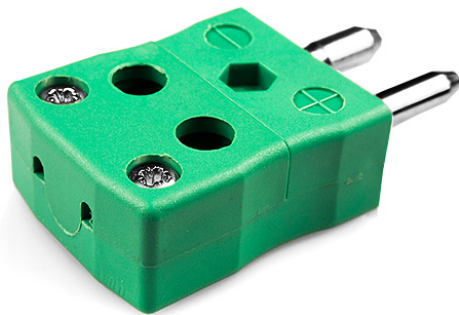


Standard Quick Wire Thermocouple Connector Plug IS-K-MQ Type K IEC



[Click here to view product](#)

Product Code	XE-1411-001
General Description	Easy 'jab-in' connection for rapid termination, contacts are polarised to prevent incorrect connection.
Thermocouple Type	K IEC
Connector Type	Quick Wire Plug
Connector Size	Standard
Colour	Green
Max. Temperature	220°C
Pins	Solid Round Pins
+Positive Contact	Nickel Chromium

-Negative Contact	Nickel Alloy
Standards Met	BS EN 50212:1997. RoHS

