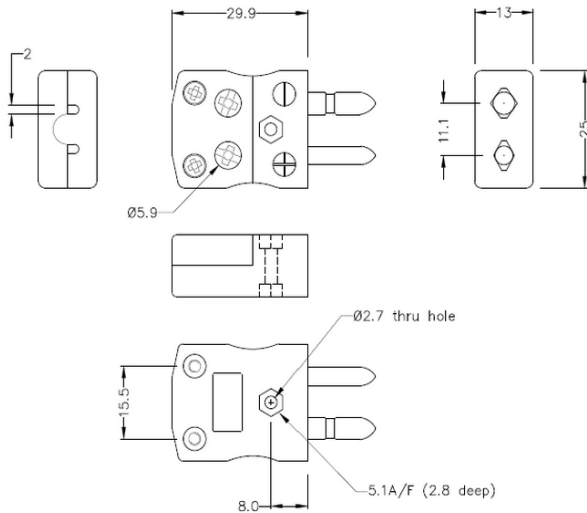
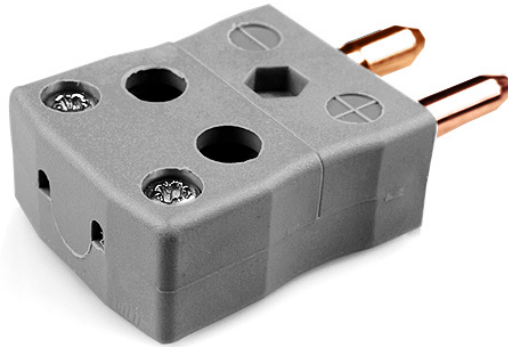
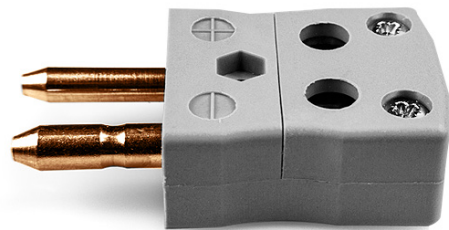


# Standard Quick Wire Thermocouple Connector IS-B-MQ Plug Type B IEC



**Standard in-line Plug - Quick Wire**  
(dimensions in mm)



Labfacility are the UK's leading manufacturer of Temperature Sensors, Thermocouple Connectors and associated Temperature Instrumentation and stockings of Thermocouple Cables. The Company has been trading since 1971 and is ISO9001 accredited.

**Standard Quick Wire Thermocouple Connector Plug IS-B-MQ Type B IEC**

Easy 'jab-in' connection for rapid termination, just push wire in and tighten screw. Contacts are polarised to prevent incorrect connection

**Specifications****Specifications**

<b>Product Code</b>	XE-1661-001
<b>General Description</b>	Easy 'jab-in' connection for rapid termination, contacts are polarised to prevent incorrect connection.
<b>Thermocouple Type</b>	B IEC
<b>Connector Type</b>	Quick Wire Plug
<b>Connector Size</b>	Standard
<b>Colour</b>	Grey
<b>Max. Temperature</b>	220°C
<b>Pins</b>	Solid Round Pins
<b>+Positive Contact</b>	Copper
<b>-Negative Contact</b>	Copper
<b>Standards Met</b>	BS EN 50212:1997. RoHS