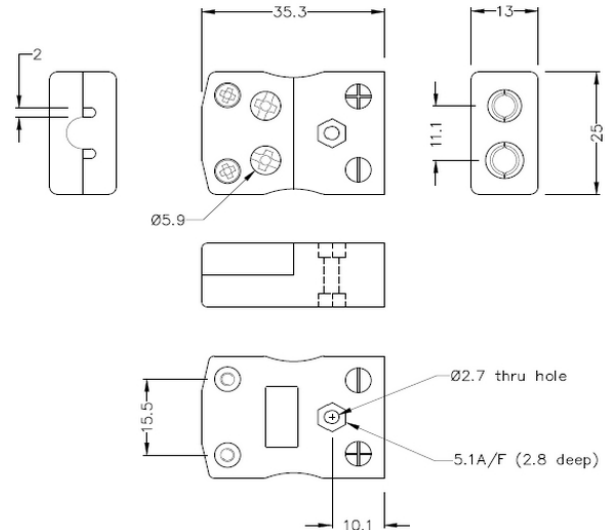


# Standard Quick Wire Thermocouple Connector Socket IS-J-FQ Type J IEC



**Standard in-line Socket - Quick Wire**  
(dimensions in mm)

[Click here to view product](#)

<b>Product Code</b>	XE-1472-001
<b>General Description</b>	Easy 'jab-in' connection for rapid termination, contacts are polarised to prevent incorrect connection.
<b>Thermocouple Type</b>	J IEC
<b>Connector Type</b>	Quick Wire Socket
<b>Connector Size</b>	Standard
<b>Colour</b>	Black
<b>Max. Temperature</b>	220°C
<b>+Positive Contact</b>	Iron
<b>-Negative Contact</b>	Copper Nickel

Standards Met	BS EN 50212:1997. RoHS
---------------	------------------------

