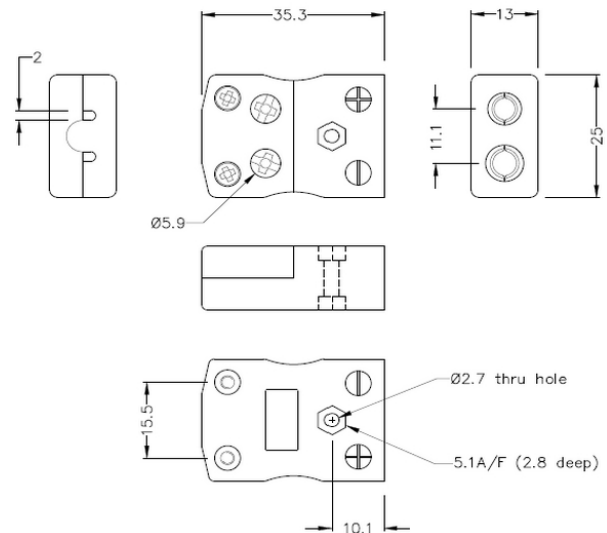


Standard Quick Wire Thermocouple Connector Socket IS-T-FQ Type T IEC



Standard in-line Socket - Quick Wire
(dimensions in mm)

[Click here to view product](#)

Product Code	XE-1502-001
General Description	Easy 'jab-in' connection for rapid termination, contacts are polarised to prevent incorrect connection.
Thermocouple Type	T IEC
Connector Type	Quick Wire Socket
Connector Size	Standard
Colour	Brown
Max. Temperature	220°C
+Positive Contact	Copper
-Negative Contact	Copper Nickel

Standards Met	BS EN 50212:1997. RoHS
---------------	------------------------

