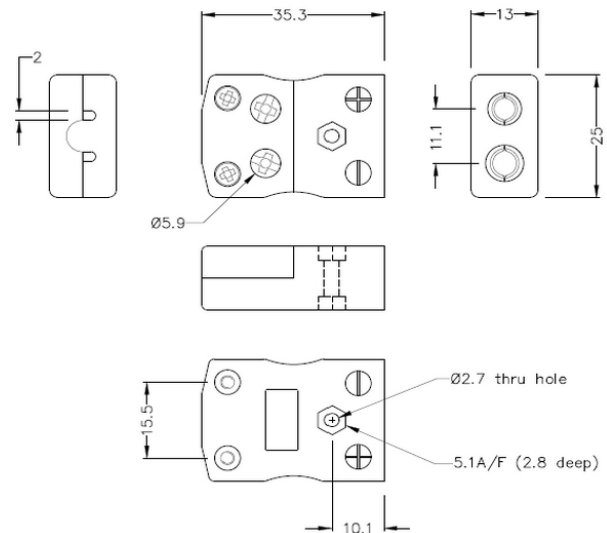


Standard Quick Wire Thermocouple Connector Socket IS-E-FQ Type E IEC



Standard in-line Socket - Quick Wire
(dimensions in mm)

[Click here to view product](#)

Product Code	XE-1642-001
General Description	Easy 'jab-in' connection for rapid termination, contacts are polarised to prevent incorrect connection.
Thermocouple Type	E IEC
Connector Type	Quick Wire Socket
Connector Size	Standard
Colour	Violet
Max. Temperature	220°C
+Positive Contact	Nickel Chromium
-Negative Contact	Copper Nickel

Standards Met	BS EN 50212:1997. RoHS
----------------------	------------------------

