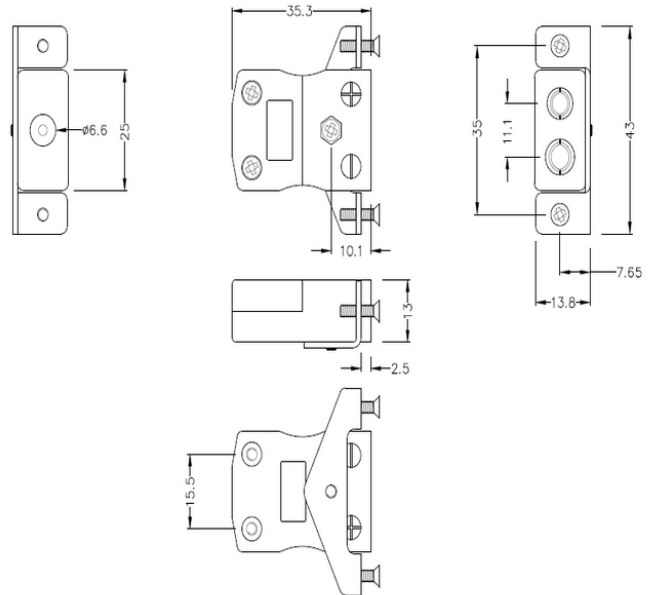
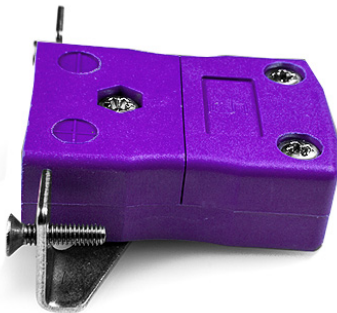


Standard Panel Mount Thermocouple Connector with Stainless Steel Bracket IS-E-SSPF Type E IEC



Standard in-line Socket with stainless steel mounting bracket
 (dimensions in mm)

[Click here to view product](#)

Product Code	XE-1638-001
General Description	Intended for use in more industrial processes but can be used in all applications as desired
Thermocouple Type	E IEC
Connector Type	Socket with SS Bracket
Connector Size	Standard
Colour	Violet
Max. Temperature	220°C
+Positive Contact	Nickel Chromium
-Negative Contact	Copper Nickel

Standards Met	BS EN 50212:1997. RoHS
----------------------	------------------------

