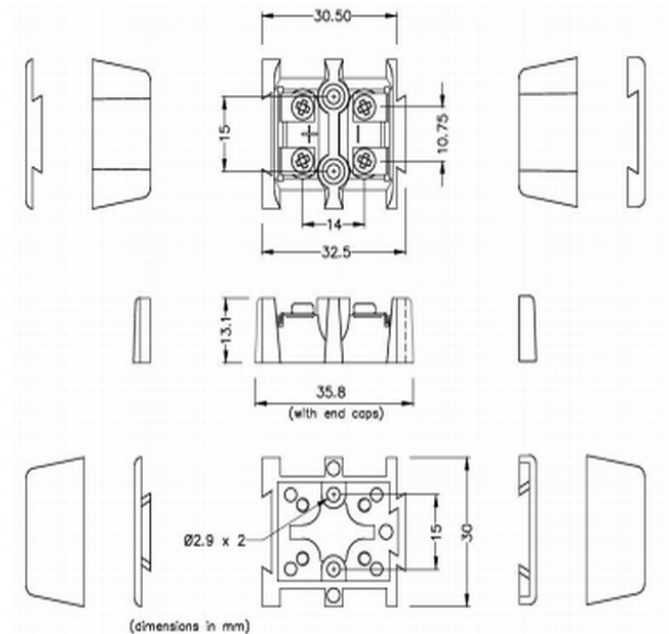
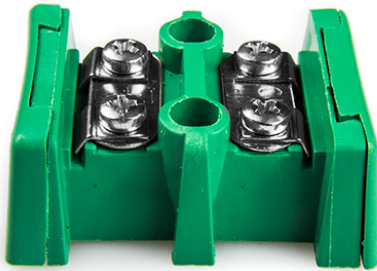


Barrier Terminal Block Thermocouple Connector IS-K-BTS Type K IEC



[Click here to view product](#)

Product Code	XE-1940-001
General Description	Supplied in single, interlocking pairs. Connections in thermocouple material
Thermocouple Type	K IEC
Connector Type	Barrier Terminal Blocks
Colour	Green
Dimensions	See Schematic Drawing (Product Literature Tab)
Max. Temperature	220°C
+Positive Contact	Nickel Chromium
-Negative Contact	Nickel Alloy
Standards Met	BS EN 50212:1997. RoHS