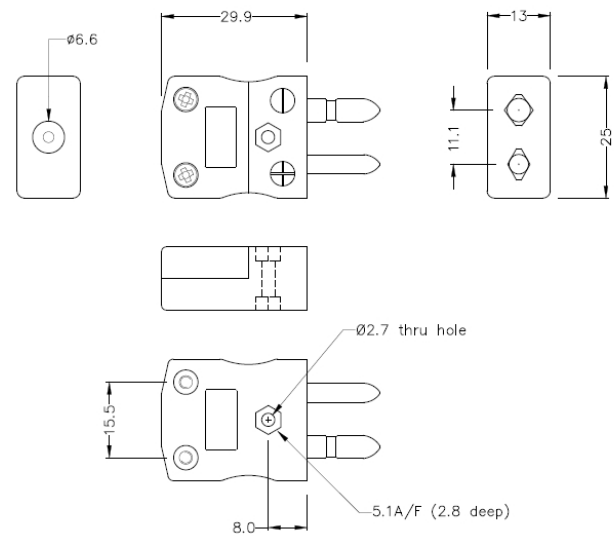


# Standard Thermocouple Connector Plug AS-K-M Type K ANSI



**Standard in-line Plug**  
 (dimensions in mm)

[Click here to view product](#)

<b>Product Code</b>	XE-1430-001
<b>General Description</b>	Contacts are polarised to prevent incorrect connection
<b>Thermocouple Type</b>	K ANSI
<b>Connector Type</b>	Plug
<b>Connector Size</b>	Standard
<b>Colour</b>	Yellow
<b>Dimensions</b>	See Schematic Drawing (Product Literature Tab)
<b>Max. Temperature</b>	220°C
<b>Pins</b>	Solid Round Pins
<b>+Positive Contact</b>	Nickel Chromium

<b>-Negative Contact</b>	Nickel Alloy
<b>Standards Met</b>	BS EN 50212:1997. RoHS

