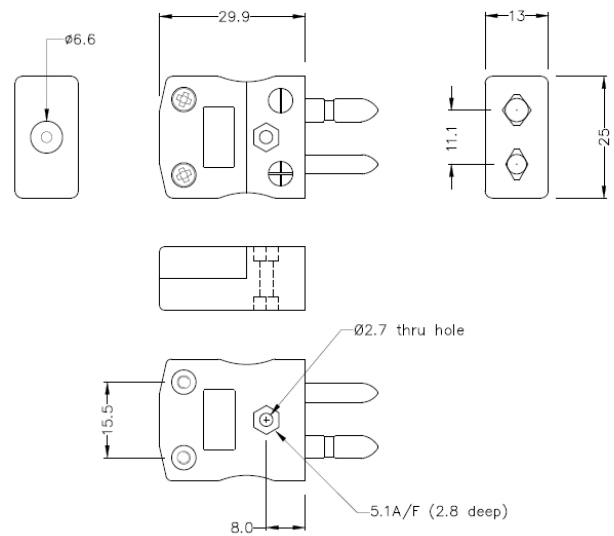


Standard Thermocouple Connector Plug AS-E-M Type E ANSI



Standard in-line Plug
 (dimensions in mm)

[Click here to view product](#)

Product Code	XE-9110-001
General Description	Contacts are polarised to prevent incorrect connection
Thermocouple Type	E ANSI
Connector Type	Plug
Connector Size	Standard
Colour	Violet
Max. Temperature	220°C
Pins	Solid Round Pins
+Positive Contact	Nickel Chromium
-Negative Contact	Copper Nickel

Standards Met	BS EN 50212:1997. RoHS
----------------------	------------------------

