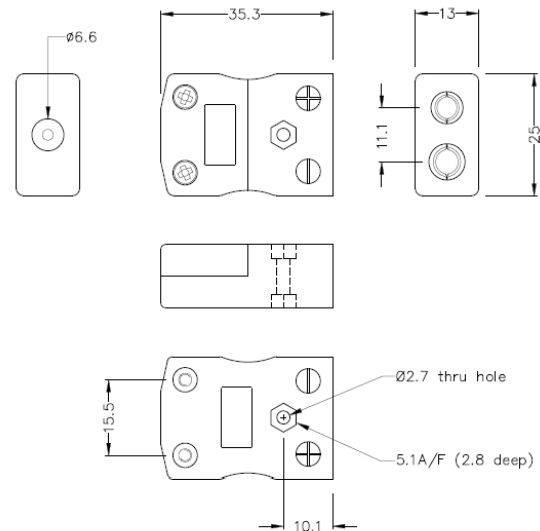


# Standard Thermocouple Connector In-Line Socket AS-R/S-F Type R/S ANSI



**Standard in-line Socket**  
(dimensions in mm)

[Click here to view product](#)

<b>Product Code</b>	XE-1612-001
<b>General Description</b>	Accepts standard round plug pins, contacts are polarised to prevent incorrect connection.
<b>Thermocouple Type</b>	R/S ANSI
<b>Connector Type</b>	Socket
<b>Connector Size</b>	Standard
<b>Colour</b>	Green
<b>Max. Temperature</b>	220°C
<b>+Positive Contact</b>	Copper
<b>-Negative Contact</b>	Copper Alloy

Standards Met	BS EN 50212:1997. RoHS
---------------	------------------------

