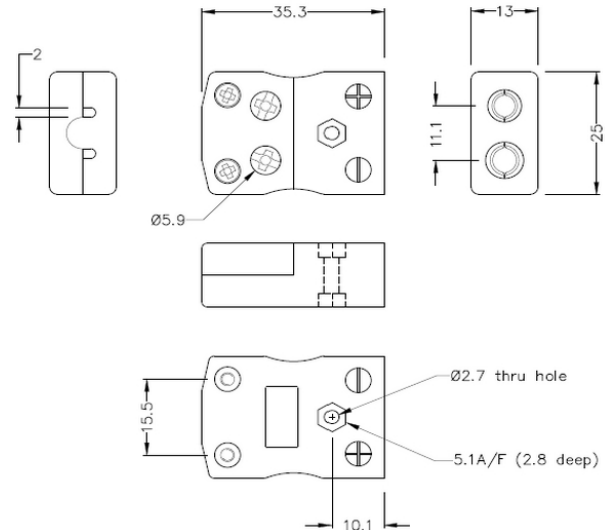


Standard Quick Wire Thermocouple Connector Socket AS-R/S-FQ Type R/S ANSI



Standard in-line Socket - Quick Wire
(dimensions in mm)

[Click here to view product](#)

Product Code	XE-1622-001
General Description	Easy 'jab-in' connection for rapid termination, contacts are polarised to prevent incorrect connection.
Thermocouple Type	R/S ANSI
Connector Type	Quick Wire Socket
Connector Size	Standard
Colour	Green
Max. Temperature	220°C
+Positive Contact	Copper
-Negative Contact	Copper Alloy

Standards Met	BS EN 50212:1997. RoHS
----------------------	------------------------

