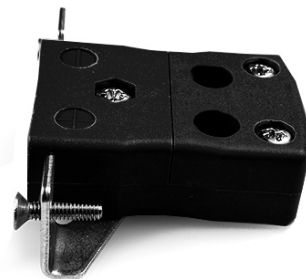


Standard Quick Wire Panel Mount with Stainless Steel Bracket AS-J-SSPFQ Type J ANSI



Standard Socket - Quick Wire with stainless steel mounting bracket
(dimensions in mm)



Labfacility are the UK's leading manufacturer of Temperature Sensors, Thermocouple Connectors and associated Temperature Instrumentation and stockings of Thermocouple Cables. The Company has been trading since 1971 and is ISO9001 accredited.

Standard Quick Wire Panel Mount Thermocouple Connector with Stainless Steel Bracket AS-J-SSPFQ Type J ANSI

Intended for use in more industrial processes but can be used in all applications as desired. Easy 'jab-in' connection for rapid termination, just push wire in and tighten screw

Specifications**Specifications**

| | |
|----------------------------|---|
| Product Code | XE-9139-001 |
| General Description | Easy 'jab-in' connection for rapid termination, just push wire in and tighten screw |
| Thermocouple Type | J ANSI |
| Connector Type | Quick Wire Socket with SS Bracket |
| Connector Size | Standard |
| Colour | Black |
| Max. Temperature | 220°C |
| +Positive Contact | Iron |
| -Negative Contact | Copper Nickel |
| Standards Met | BS EN 50212:1997. RoHS |