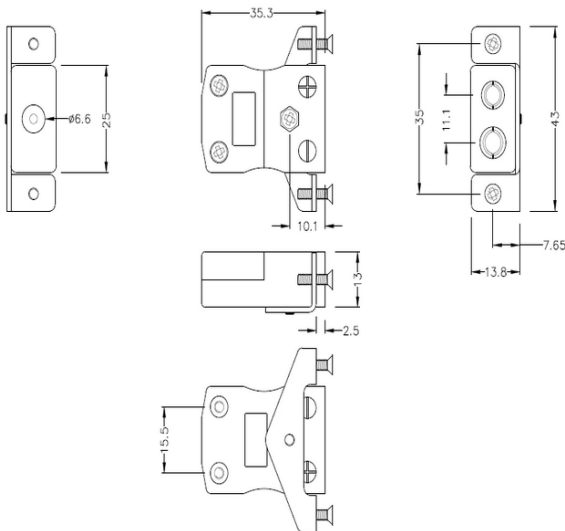
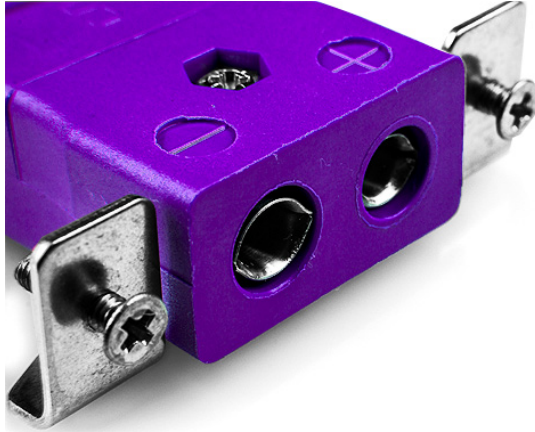
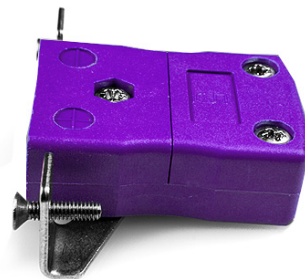


Standard Panel Mount Thermocouple Connector with Stainless Steel Bracket JS-E-SSPF Type E JIS



Standard in-line Socket with stainless steel mounting bracket
(dimensions in mm)



Labfacility are the UK's leading manufacturer of Temperature Sensors, Thermocouple Connectors and associated Temperature Instrumentation and stockings of Thermocouple Cables. The Company has been trading since 1971 and is ISO9001 accredited.

Standard Panel Mount Thermocouple Connector with Stainless Steel Bracket JS-E-SSPF Type E JIS

Intended for use in more industrial processes but can be used in all applications as desired

Specifications**Specifications**

Product Code	XE-9358-001
General Description	Intended for use in more industrial processes but can be used in all applications as desired
Thermocouple Type	E JIS
Connector Type	Socket with SS Bracket
Connector Size	Standard
Colour	Violet
Max. Temperature	220°C
+Positive Contact	Nickel Chromium
-Negative Contact	Copper Nickel
Standards Met	BS EN 50212:1997. RoHS