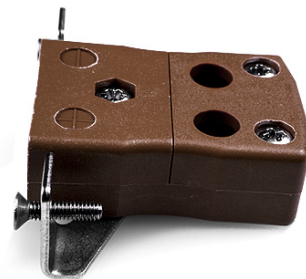


Standard Quick Wire Panel Mount Thermocouple Connector with Stainless Steel Bracket JS-T-SSPFQ Type T JIS



Standard Socket - Quick Wire with stainless steel mounting bracket
(dimensions in mm)



Labfacility are the UK's leading manufacturer of Temperature Sensors, Thermocouple Connectors and associated Temperature Instrumentation and stockings of Thermocouple Cables. The Company has been trading since 1971 and is ISO9001 accredited.

Standard Quick Wire Panel Mount Thermocouple Connector with Stainless Steel Bracket JS-T-SSPFQ Type T JIS

Intended for use in more industrial processes but can be used in all applications as desired. Easy 'jab-in' connection for rapid termination, just push wire in and tighten screw

Specifications
Specifications

Product Code	XE-9379-001
General Description	Easy 'jab-in' connection for rapid termination, just push wire in and tighten screw
Thermocouple Type	T JIS
Connector Type	Quick Wire Socket with SS Bracket
Connector Size	Standard
Colour	Brown
Dimensions	See Schematic Drawing (Product Literature Tab)
Max. Temperature	220°C
+Positive Contact	Copper
-Negative Contact	Copper Nickel
Standards Met	BS EN 50212:1997. RoHS